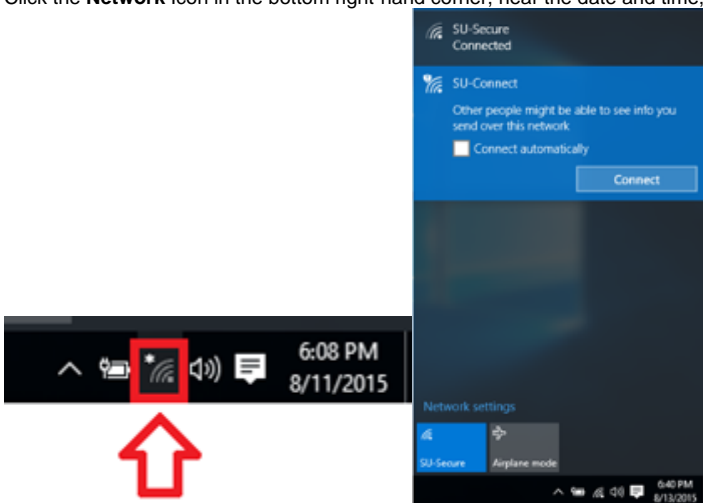


Connect to the SU-Secure Wireless Network using Windows 10

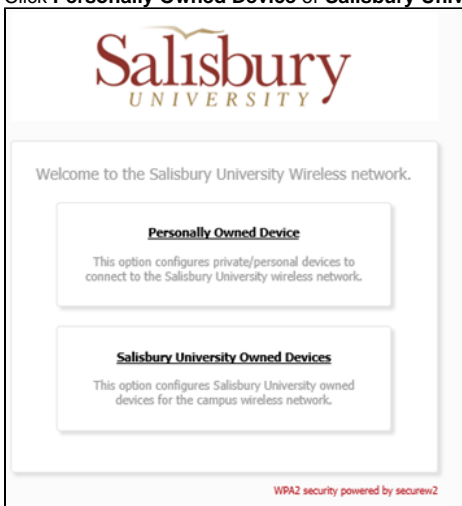
This document will give you instructions on how to connect your Windows 10 Computer to our SU-Secure wireless network using SU-Connect.

Automated System Instructions

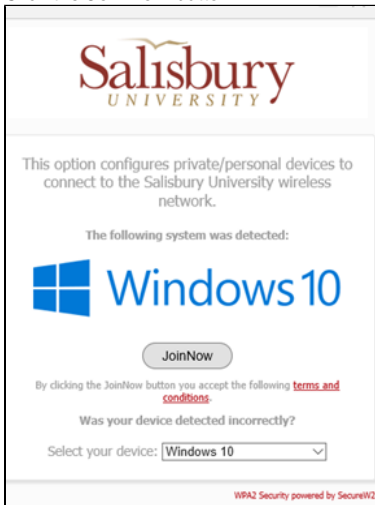
1. Click the **Network** icon in the bottom right-hand corner, near the date and time, and select **SU-Connect** and click **Connect**.



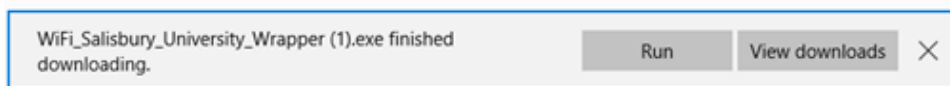
2. Open a web browser, such as **Internet Explorer**, and navigate to <http://connect.salisbury.edu>.
3. Click **Personally Owned Device** or **Salisbury University Owned Devices**.



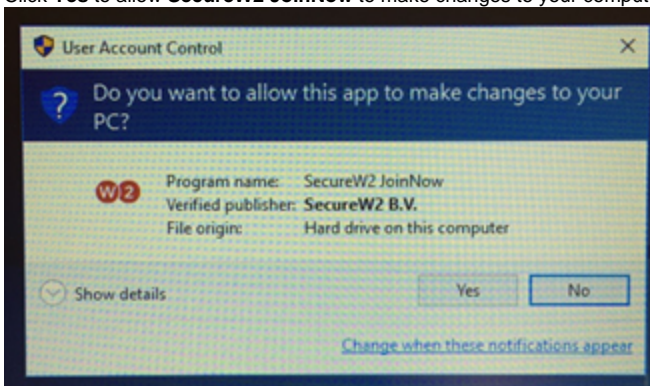
4. Click the **JoinNow** button.



5. Click **Run** to run **WiFi_Salisbury_University_Wrapper.exe**.



6. Click **Yes** to allow **SecureW2 JoinNow** to make changes to your computer.



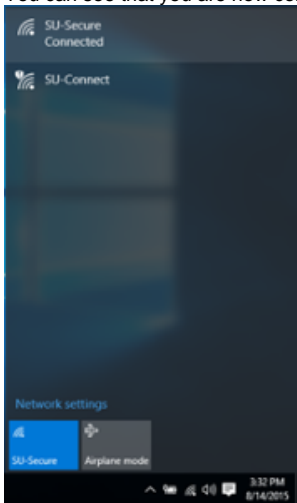
7. Now enter your Salisbury Username and Password and click **Next**.



8. If your password and up-to-date and your account is active, this process will complete and you will need to click **Done**.



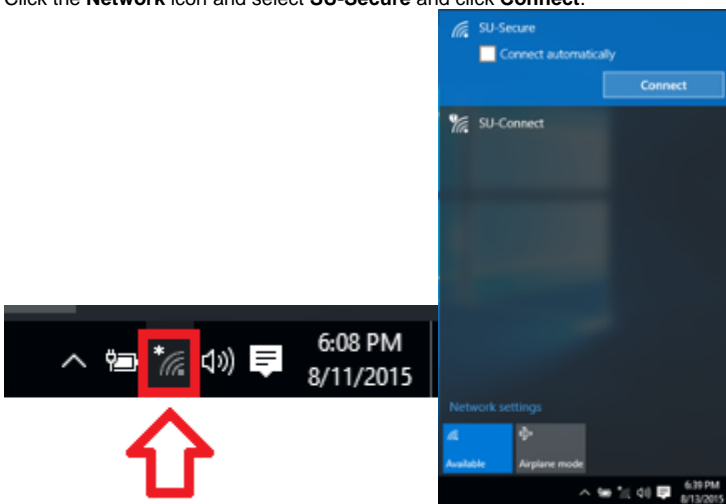
9. You can see that you are now connected to **SU-Secure** by clicking the **Network** icon.



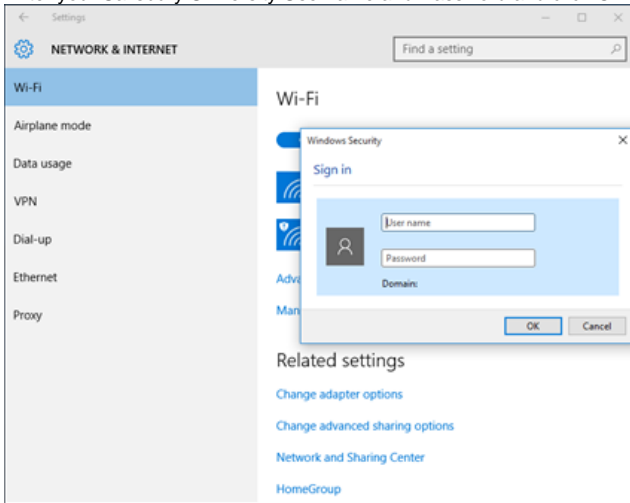
Direct Connection

If the automated process does not work on your computer, here are the instructions on how to connect directly to SU-Secure.

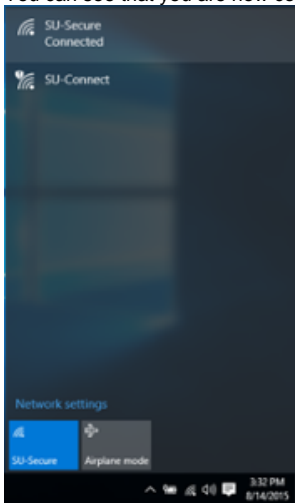
1. Click the **Network** icon and select **SU-Secure** and click **Connect**.



2. Enter your Salisbury University Username and Password and click **OK**.



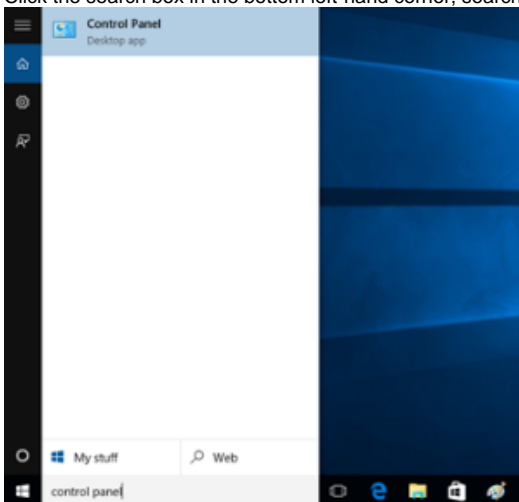
3. You can see that you are now connected to **SU-Secure** by clicking the **Network** icon.



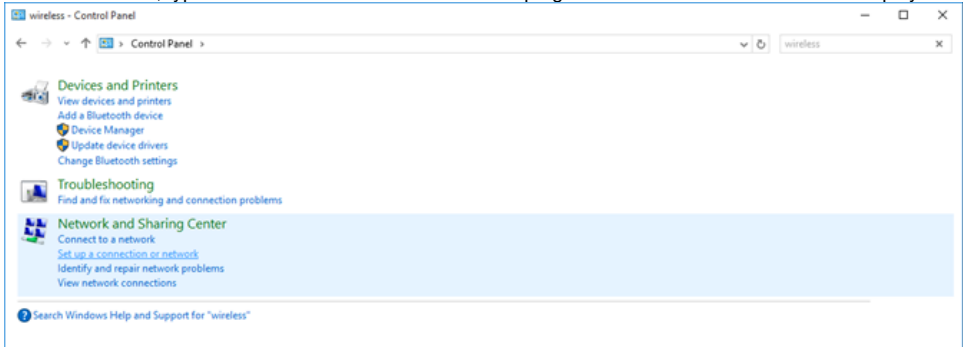
Manually Connect

If connecting directly to SU-Secure does not work on your computer, here are the instructions on how to manually connect to SU-Secure.

1. Click the search box in the bottom left-hand corner, search for and select **Control Panel**.

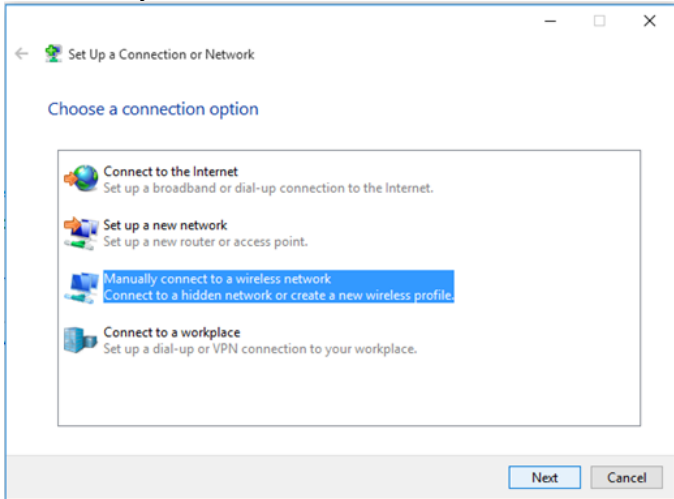


2. In **Control Panel**, type **wireless** in the search box in the top right corner. The window below will display matches to the search.

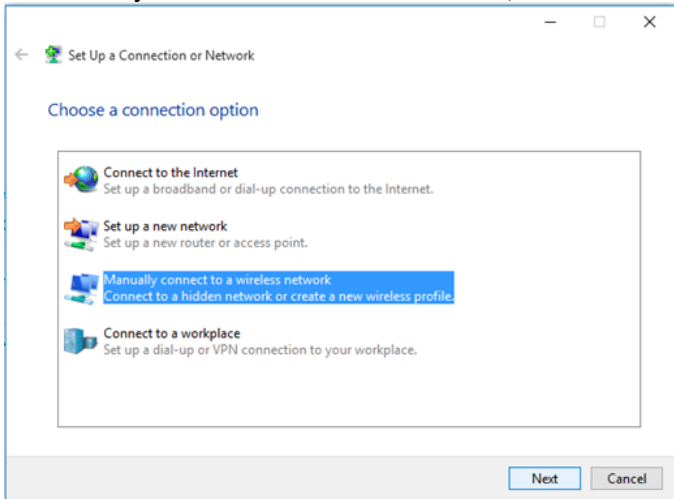


3. Select **Set up a connection or network** under **Network and Sharing Center**.

4. Select **Manually connect to a wireless network** and click **Next**.

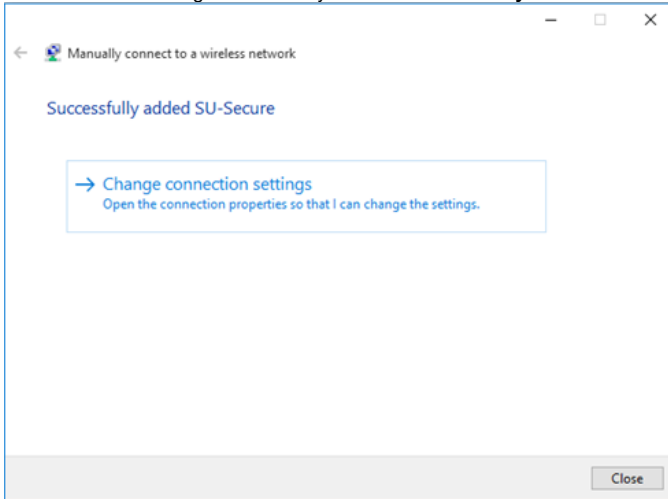


5. In the **Manually connect to a wireless network** window, for **Network Name** enter **SU-Secure**.



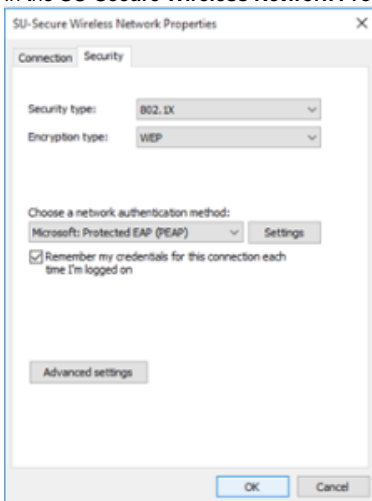
- For **Security type**, select **WPA2-Enterprise** from the drop-down.
- For **Encryption Type**, make sure **AES** is selected from the drop-down.
- Make sure that both **Start this connection automatically** and **Connect even if the network is not broadcasting** are checked.
- Then click **Next**.

6. The window will change to indicate you have **Successfully added SU-Secure**.



7. Click **Change connection settings**.

8. In the **SU-Secure Wireless Network Properties** window, click the **Security** tab.



a. In **Choose a network authentication method**, **Microsoft: Protected EAP (PEAP)** should be selected.

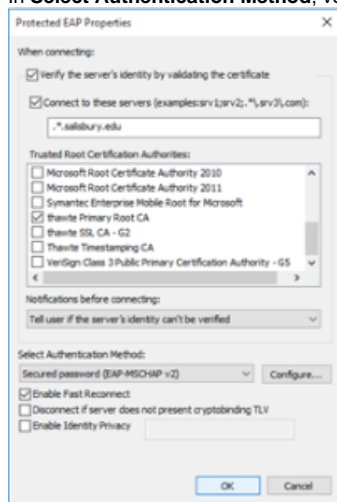
b. Click the **Settings** button.

c. In the **Protected EAP Properties** window, make sure that **Validate server certificate** is checked.

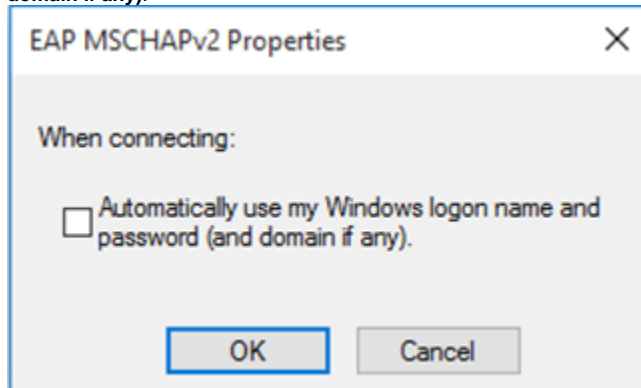
d. Check **Connect to these servers:** and type ***.salisbury.edu** (period + asterisk + period + salisbury + period + edu) in the box provided.

e. In **Trusted Root Certification Authorities**, check **thawte Primary Root CA**.

f. In **Select Authentication Method**, verify that **Secured password (EAP-MSCHAP v2)** is selected and click **Configure**



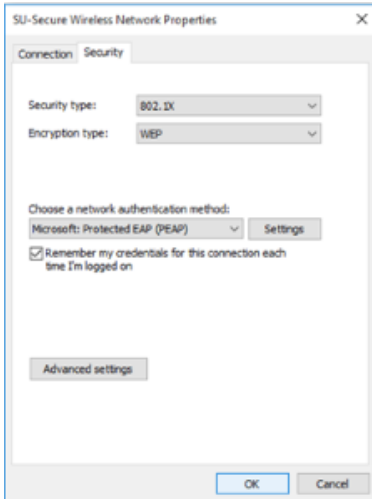
- i. In the EAP MSCHAPv2 Properties window, uncheck **Automatically use my Windows logon name and password (and domain if any)**.



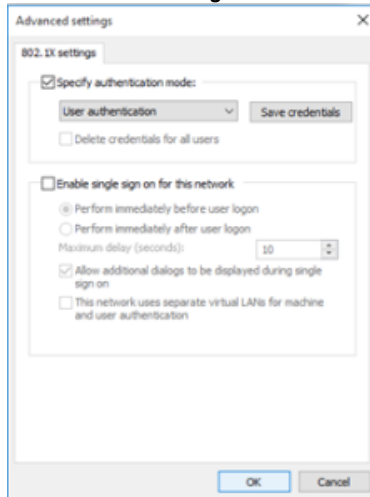
- ii. Click **OK**.

- g. Click **OK** to exit the **Protected EAP Properties** window.

9. In the **SU-Secure Wireless Network Properties** window, under the **Security** tab, click the **Advanced settings** button.



- a. Click the **802.1x settings** tab.

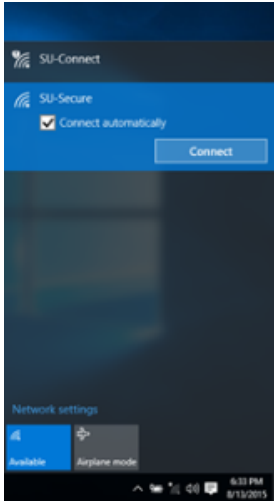


- i. Make sure that **Specify authentication mode** is checked, and select **User authentication** from the drop-down menu.

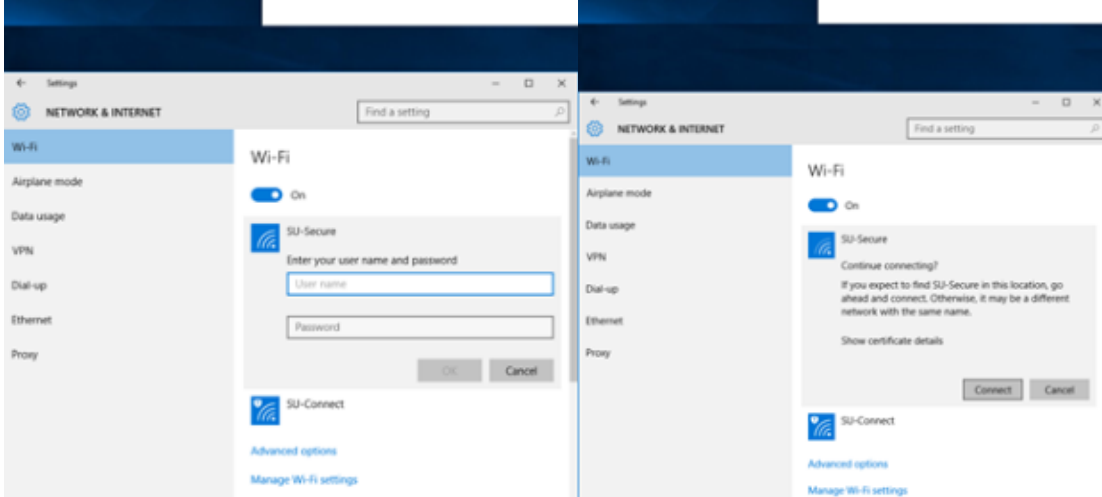
- b. Click **OK** to close the **Advanced settings** window.

10. Click **OK** to exit the **SU-Secure Wireless Network Properties** window.
11. Click **Close** on the **Manually Connect to a Wireless Network** window.
12. Exit out of the **Control Panel** window as well.

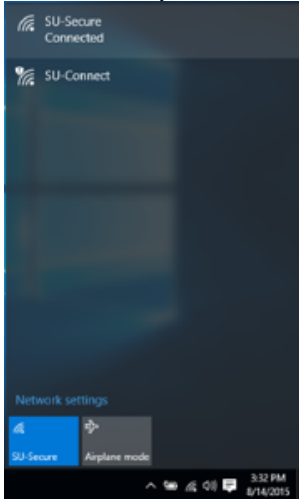
13. Click the **Network** icon and select **SU-Secure** and click **Connect**.



14. Enter your Salisbury University Username and Password in the click **OK** and then **Connect**.



15. You can see that you are now connected to **SU-Secure** by clicking the **Network** icon.



Related articles

Content by label

There is no content with the specified labels



